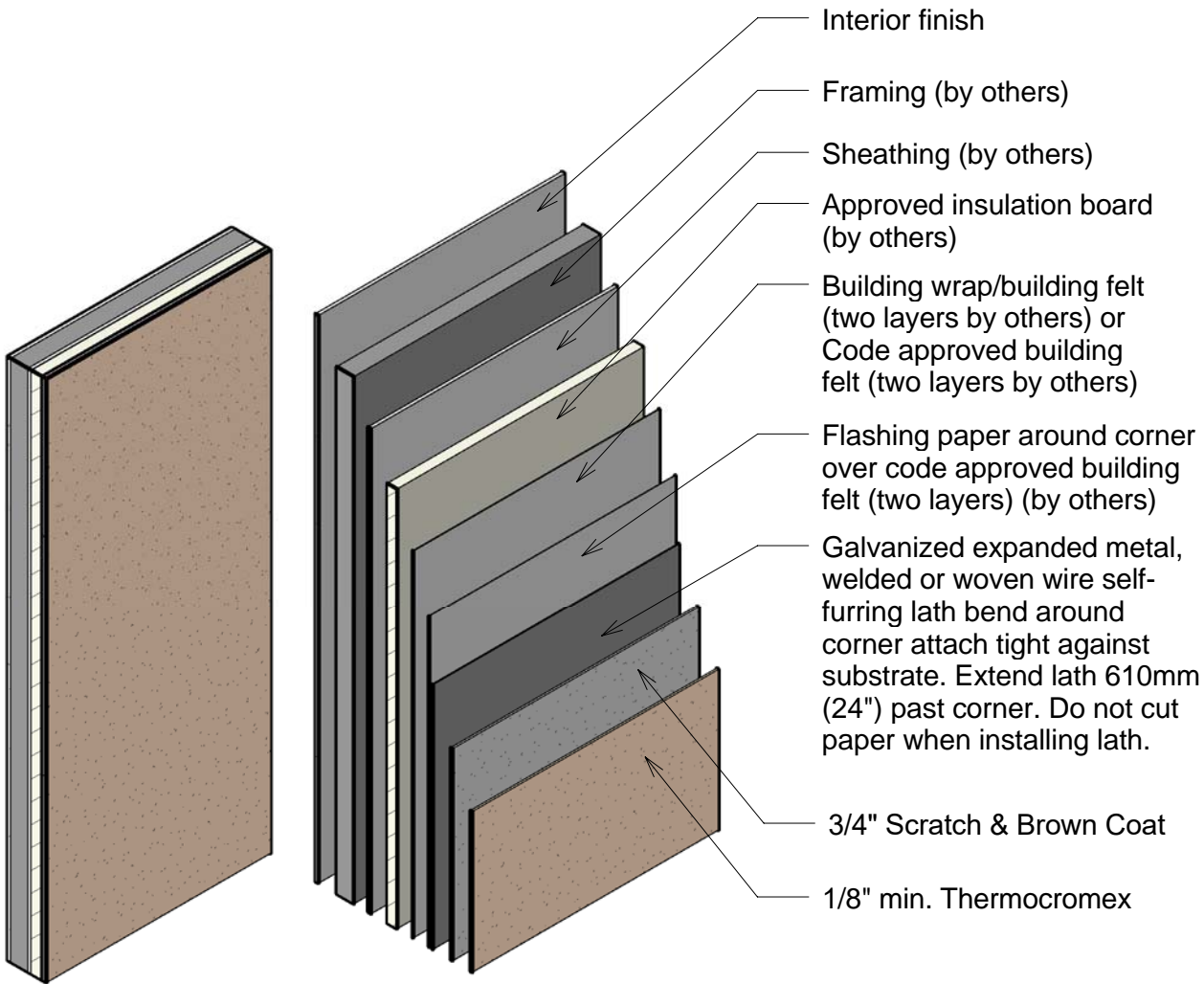


Thermocromex over Frame & Sheathing
 Inside Corner with Insulation Board



- Interior finish
- Framing (by others)
- Sheathing (by others)
- Approved insulation board (by others)
- Building wrap/building felt (two layers by others) or Code approved building felt (two layers by others)
- Flashing paper around corner over code approved building felt (two layers) (by others)
- Galvanized expanded metal, welded or woven wire self-furring lath bend around corner attach tight against substrate. Extend lath 610mm (24") past corner. Do not cut paper when installing lath.
- 3/4" Scratch & Brown Coat
- 1/8" min. Thermocromex

NOTE: ALL COMPONENTS DESIGNATED IN DRAWINGS SHALL BE DESIGNED, DETAILED AND ENGINEERED BY REPRESENTATIVES OF THE ARCHITECT, OWNER OR CONTRACTOR IN COMPLIANCE WITH MODEL CODES, ARCHITECTURAL AND ENGINEERING REQUIREMENTS PERTAINING TO SPECIFIC BUILDING PROJECTS. SOUTHWEST PROGRESSIVE ENTERPRISES INC., MAKES NO REPRESENTATION REGARDING CONFORMITY OF ITS SUGGESTIONS TO MODEL BUILDING CODES, ENGINEERING CRITERIA, SPECIFIC APPLICATIONS OR PROJECT LOCATIONS. SOUTHWEST PROGRESSIVE ENTERPRISES INC., MAKES NO WARRANTY, EXPRESSED OR IMPLIED AS TO THE ARCHITECTURAL DESIGN, ENGINEERING, OR WORKMANSHIP OF PROJECTS USING THERMOCROMEX.