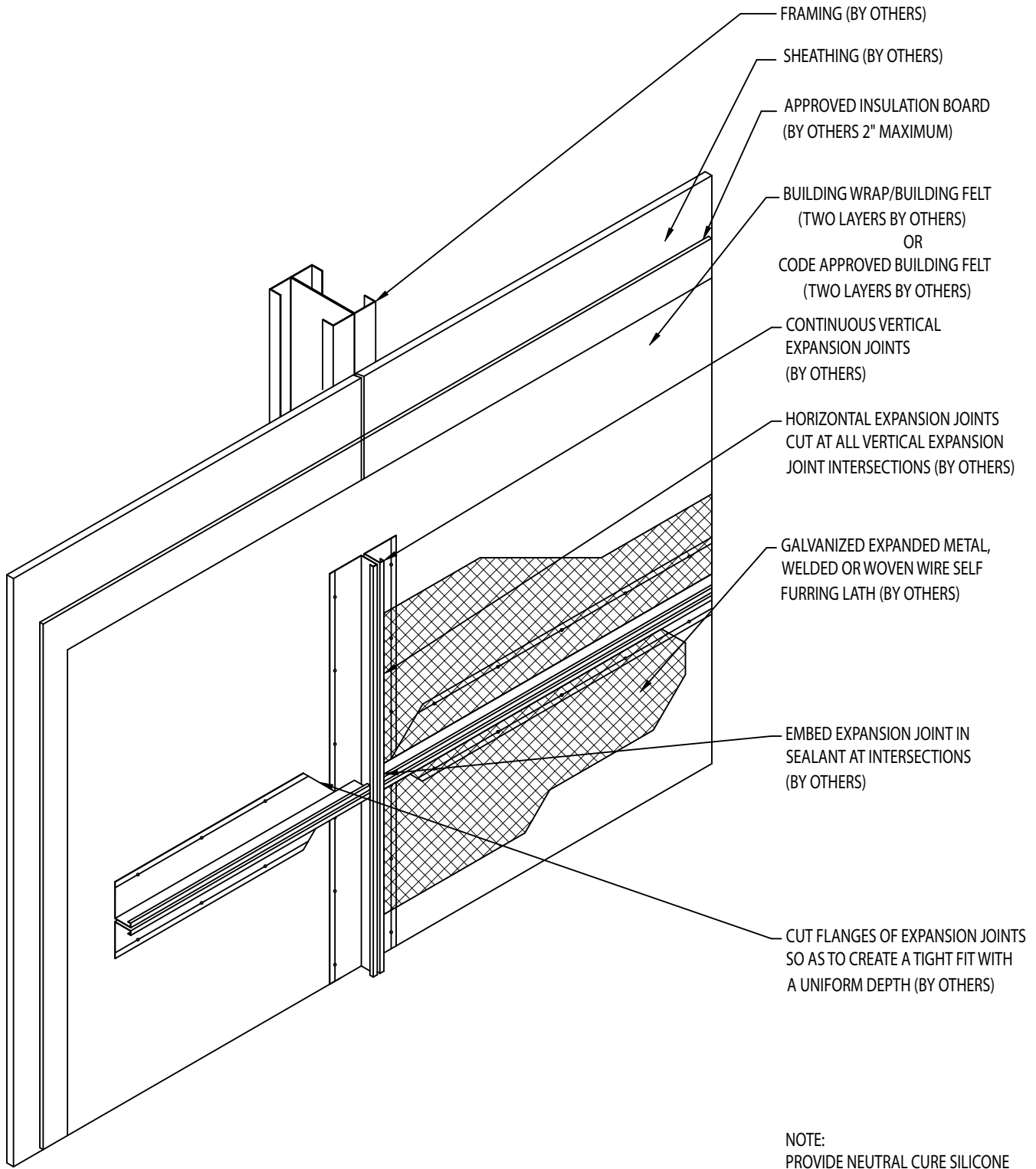


THERMOCROMEX OVER FRAME & SHEATHING EXPANSION JOINT INTERSECTION



- FRAMING (BY OTHERS)
- SHEATHING (BY OTHERS)
- APPROVED INSULATION BOARD
(BY OTHERS 2" MAXIMUM)
- BUILDING WRAP/BUILDING FELT
(TWO LAYERS BY OTHERS)
OR
CODE APPROVED BUILDING FELT
(TWO LAYERS BY OTHERS)
- CONTINUOUS VERTICAL
EXPANSION JOINTS
(BY OTHERS)
- HORIZONTAL EXPANSION JOINTS
CUT AT ALL VERTICAL EXPANSION
JOINT INTERSECTIONS (BY OTHERS)
- GALVANIZED EXPANDED METAL,
WELDED OR WOVEN WIRE SELF
FURRING LATH (BY OTHERS)
- EMBED EXPANSION JOINT IN
SEALANT AT INTERSECTIONS
(BY OTHERS)
- CUT FLANGES OF EXPANSION JOINTS
SO AS TO CREATE A TIGHT FIT WITH
A UNIFORM DEPTH (BY OTHERS)

NOTE:
PROVIDE NEUTRAL CURE SILICONE
BEDDING SEALANT AREA BEHIND
EXPANSION JOINT INTERSECTIONS.
(BY OTHERS)

SCALE = 1" = 1'-0"