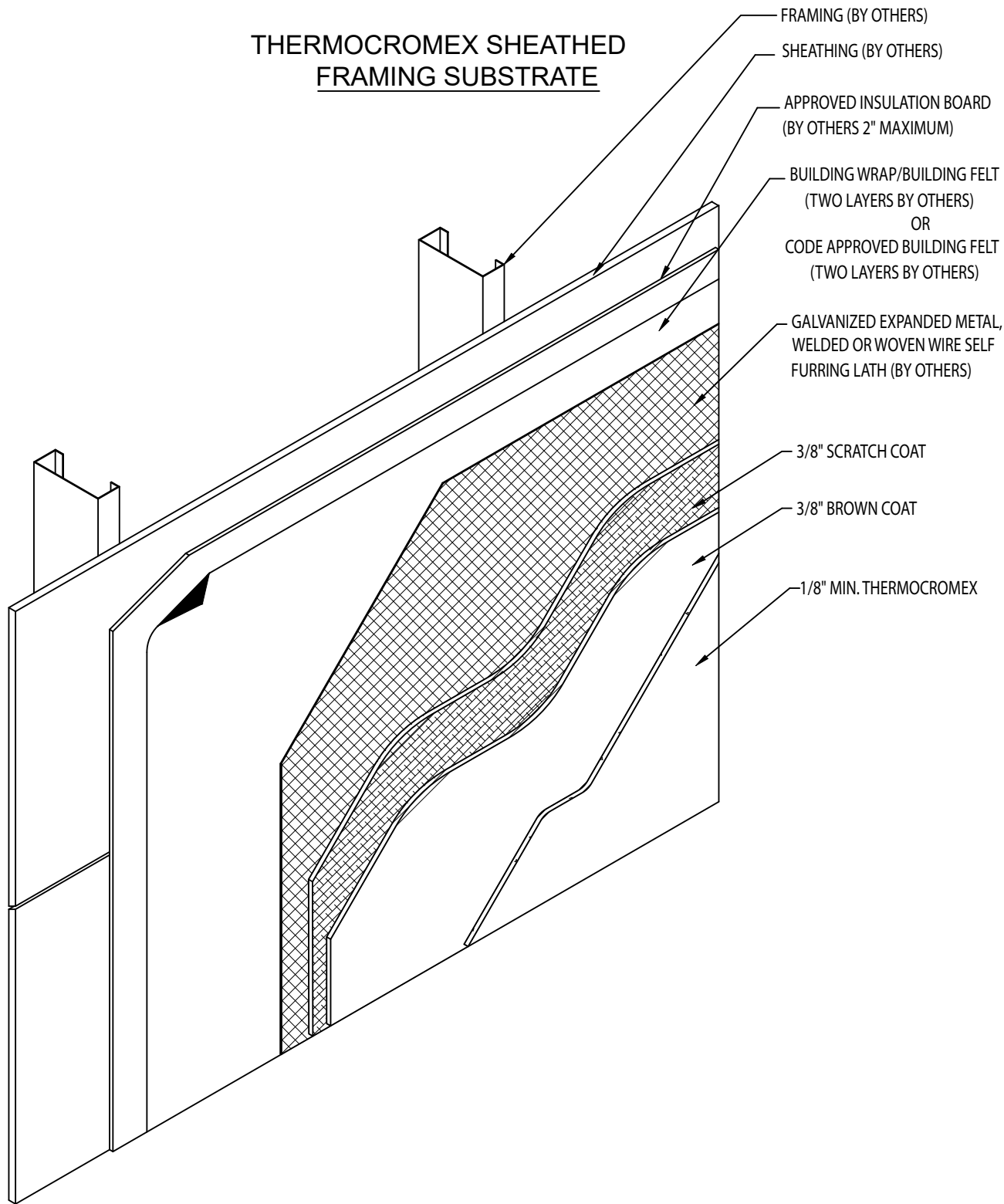


THERMOCROMEX SHEATHED FRAMING SUBSTRATE



- FRAMING (BY OTHERS)
- SHEATHING (BY OTHERS)
- APPROVED INSULATION BOARD
(BY OTHERS 2" MAXIMUM)
- BUILDING WRAP/BUILDING FELT
(TWO LAYERS BY OTHERS)
OR
CODE APPROVED BUILDING FELT
(TWO LAYERS BY OTHERS)
- GALVANIZED EXPANDED METAL,
WELDED OR WOVEN WIRE SELF
FURRING LATH (BY OTHERS)
- 3/8" SCRATCH COAT
- 3/8" BROWN COAT
- 1/8" MIN. THERMOCROMEX

SCALE = 1" = 1'-0"



www.thermocromex.com

NOTE: ALL COMPONENTS DESIGNATED IN DRAWINGS SHALL BE DESIGNED, DETAILED AND ENGINEERED BY REPRESENTATIVES OF THE ARCHITECT, OWNER OR CONTRACTOR IN COMPLIANCE WITH MODEL CODES, ARCHITECTURAL AND ENGINEERING REQUIREMENTS PERTAINING TO SPECIFIC BUILDING PROJECTS. SOUTHWEST PROGRESSIVE ENTERPRISES INC., MAKES NO REPRESENTATION REGARDING CONFORMITY OF ITS SUGGESTIONS TO MODEL BUILDING CODES, ENGINEERING CRITERIA, SPECIFIC APPLICATIONS OR PROJECT LOCATIONS. SOUTHWEST PROGRESSIVE ENTERPRISES INC., MAKES NO WARRANTY, EXPRESSED OR IMPLIED AS TO THE ARCHITECTURAL DESIGN, ENGINEERING, OR WORKMANSHIP OF PROJECTS USING THERMOCROMEX.